

X-tremeGENE HP DNA Transfection Reagent Roche

凡購買 X-tremeGENE 1ML 以上包裝產品，可 **6折** 購買 workflow 所列產品1組！

特惠方案限定期間 20181101-1210

“workflow” 請見DM背頁→

低細胞毒性，
且不含動物
性成份。

細胞株測試
之資料庫和
標準化步驟。

無須置換培養
基，更省時。

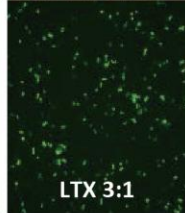
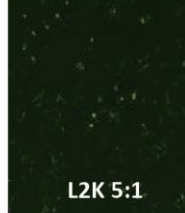
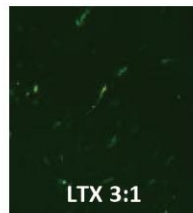
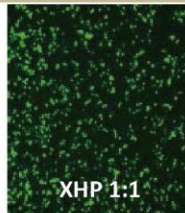
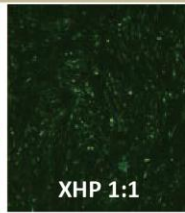
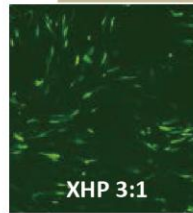
難轉染的細胞
株有更出色的
轉染效率。

超過 600 篇
以上知名文
獻引用。

Database

X-TREME vs L2K

初代細胞株或難轉染細胞株老是無法轉染成功？



human
mesenchymal
stem cells

murine mesenchymal
stem cells
(immortalized)

K562 suspension
cells

RAW 264.7
cells

擔心有細胞毒性？脫靶效應影響到其它基因表現調節？

	X-TremeGene HP		LTX	
Total number of regulated genes	3		23	
Over-expressed	BCL2L11	NPM1	PRKRA	RPS3A
		NOL3	NDUFS3	CASP6
		BRE	HSPE1	SIVA1
		TPT1	TP53I3	
Under-expressed	DDIT3	DDIT3	PML	RUNX3
	CRYAB	CASP7	CRYAB	CDKN1A
		NFKB2	RTN4	NURP1
		PMAIP1	TNFAIP3	STAT1
Percent of regulated genes	1 %		10 %	

省去置換培養基，更省時！

X-TremeGene HP/9

L2K

Fewer Steps =
Lower Costs!

Add DNA/X-tremeGENE
Transfection Reagent
mix to each well

Replace serum-containing
medium in each well

Remove serum-containing
medium from each well

Add serum-free medium
to each well

Add DNA/Transfection
Reagent mix to each well

Remove DNA/Transfection
Reagent mix from each well

DM10711001



友和貿易股份有限公司
UNI-ONWARD Corp.
客服專線：(02)2600-0611

◆台北 TEL:(02)2600-0611
◆新竹 TEL:(03)658-0508
◆台中 TEL:(04)2355-2008
◆嘉義 TEL:(05)2238-001

FAX:(02)2600-0799
FAX:(03)658-0509
FAX:(04)2355-2006
FAX:(05)2233-519

◆台南 TEL:(06)249-5488
◆高雄 TEL:(07)347-7776
◆花蓮 TEL:(03)836-0065
www.uni-onward.com.tw



X-tremeGENE 0.4ML 小包裝特惠組

1號餐

+ siRNA control
2OD-1EA
(#SCSIRNADU2D)
特惠價 8,000

2號餐

+ Duplex siRNA
2OD-1EA
(# SIRDU2D)
特惠價 12,500

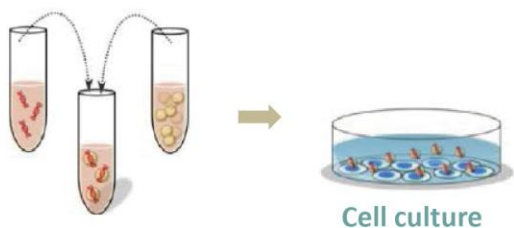
3號餐

+ G418
disulfate salt
(A1720-1G)
特惠價 9,800

Transfection Workflow



DNA/siRNA Transfection reagent



Cell culture

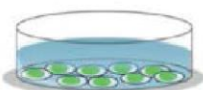
Transfection reagent

X-tremeGENE™HP DNA

難轉染的細胞株的救星!

X-tremeGENE™siRNA

可 cotransfection siRNA 和 plasmid DNA!



Cell Assay*



* Gene expression

TriPure Isolation Reagent

純化RNA效果更優於市面 TRIreagent! 更純淨!

High Pure PCR Template Preparation Kit

從全血、細胞和組織中純化核酸，特別是純化高分子量 DNA (30 -50 kb)，適於 long-template PCR。

qPCR probe (UPL system)

線上資料庫，通用型探針讓 qPCR 實驗更 Easy!

* Protein expression

Complete Protease Inhibitor

一錠搞定的蛋白酶抑制劑!

* Cell assay

WST-1 (Cell viability)

高靈敏度! 低毒性!

BrdU (Proliferation)

anti-BrdU-POD，不用再加2抗，更省時、靈敏度更高!

TUNEL Assay (Cell death)

TUNEL 最經典產品!

Complete Protease Inhibitor

含 EDTA	不含 EDTA	包裝 (一錠-50ml; mini-10ml)
04693116001	04693132001	EASYpacks 20 Tab.
	05056489001	Glass vials 3 × 20 Tab.
04693124001	04693159001	Mini EASYpacks 30 Tab.

TUNEL Assay

In Situ Cell Death Detection Kit

11684795910	Fluorescein 綠色螢光
12156792910	TMR red 紅色螢光
11684817910	POD 酵素呈色